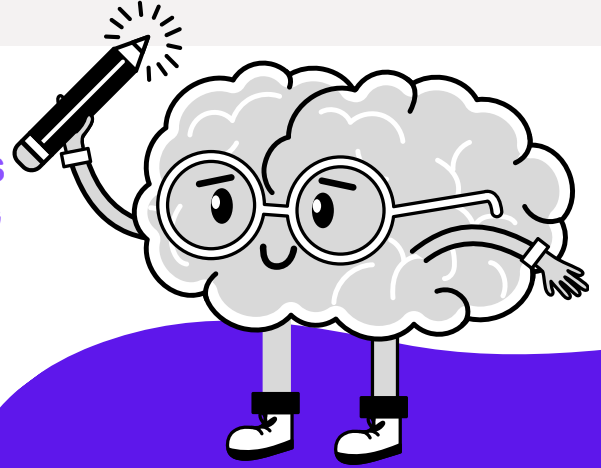


MRI STUDY FOR 16-19 YEAR OLDS

WE ARE USING NON-INVASIVE MRI BRAIN SCANS TO FIND OUT MORE ABOUT THE BRAIN CHEMICALS IMPORTANT FOR FLEXIBLE BEHAVIOUR/LEARNING IN OBSESSIVE COMPULSIVE DISORDER (OCD).



GET IN TOUCH

EMAIL:

robbinlab@psychol.cam.ac.uk



We are looking for teenagers aged 16-19 both with and without OCD to take part in our research.

WHERE?

Wolfson Brain Imaging Centre in Cambridge, Addenbrooke's Hospital site.

WHAT HAPPENS IN THE STUDY?

1. An MRI scan (you will be in the scanner for up to 60 mins).
2. Some computerised games outside the scanner (which takes 90mins).

WANT TO FIND OUT MORE?

Send us an email and we will provide you with a detailed description of the study and are happy to answer any questions you may have! If you still want to take part, we can see you on weekdays, weekends or during the school holidays.



@ocd_cambridge



www.ocdcambridge.com